

FIG. #2

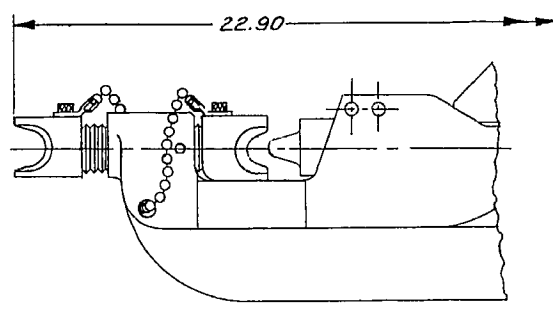


FIG. #3

NOTE:
NESTS ON THIS VARIATION NOT ADJUSTABLE.
NESTS CAN BE INTERCHANGED BUT
SCREW IS FIXED TO FRAME

CAT. NO.	FIG.	ACCOMMODATES		REF. DWG.
		CONNECTORS	CONDUCTORS	
MY28	1	YAV-L STRAIGHT COPPER HYLUGS YBV-L FLAG TYPE COPPER HYLUGS YSV-L COPPER HYLINKS YAV-R AND YAV-S 90° HYLUGS	AN-8 (.169 DIA.) TO AN-0000 (.615 DIA.) COPPER AIRCRAFT CABLE	FD17403
MY28-1	2	YA-L COPPER HYLUGS YS-L COPPER HYLINKS	*N23 (.171 DIA.) TO *N250 (.577 DIA.) COPPER NAVY CABLE	FD17404
MY28-4 (WHITE HANDLES)	2	YAV-A-L STRAIGHT ALUMINUM HYLUGS YAV-A-R AND YAV-A-S 90° ALUMINUM HYLUGS YBV-A-L FLAG TYPE ALUMINUM HYLUGS YSV-A-L ALUMINUM HYLINKS	AL-8 (.160 DIA.) TO AL-0000 (.600 DIA.) ALUMINUM AIRCRAFT CABLE	FD17373
MY28-6	2	YAEV-L STRAIGHT COPPER HYLUGS YAEV-R AND YAEV-S 90° COPPER HYLUGS	AN-8 (.167 DIA.) TO AN-00 (.490 DIA.) COPPER AIRCRAFT CABLE	FD24038
MY29	2	YA-L COPPER HYLUGS YS-L COPPER HYLINKS	*8 STR. (.146 DIA.) TO 250 MCM (.575 DIA.) COPPER COMMERCIAL CABLE	FD17402
MY29-3	2	YA-L COPPER HYLUGS YS-L COPPER HYLINKS YA-A ALUMINUM HYLUGS YS-A ALUMINUM HYLINKS	*8 STR. (.146 DIA.) TO 250 MCM (.575 DIA.) COPPER COMMERCIAL CABLE *8 STR. (.146 DIA.) TO 4/0 STR. (.528 DIA.) ALUMINUM BUILDING WIRE	FD17451
MY29-4	2	YA-L AND YAV-L COPPER HYLUGS YS-L AND YSV-L COPPER HYLINKS	325/24 (.460 DIA.), 125/24 (.260 DIA.) 9/124 (.200 DIA.) EXTRA FLEXIBLE CABLE *8 STR. (.146 DIA.) TO 250 MCM (.575 DIA.) COPPER COMMERCIAL CABLE	FD22026
MY29-6	3	YAV6C COPPER HYLUG YAV25E COPPER HYLUG	*6-19 STR. (.184 DIA.) COPPER COMMERCIAL CABLE *2/0-61 STR. (.418 DIA.) COPPER COMMERCIAL CABLE	
MY29-11	2	YA, YA-L AND YAV-L COPPER HYLUGS YS-L AND YSV-L & YS COPPER HYLINKS	*8 STR. (.166 DIA.) TO 4/0 (.602 DIA.) COPPER MINE MACHINE CABLE *8 STR. (.146 DIA.) TO 250 (.575 DIA.) COPPER COMMERCIAL CABLE	FD30276 DA30379

TYPICAL SETTING PLATE

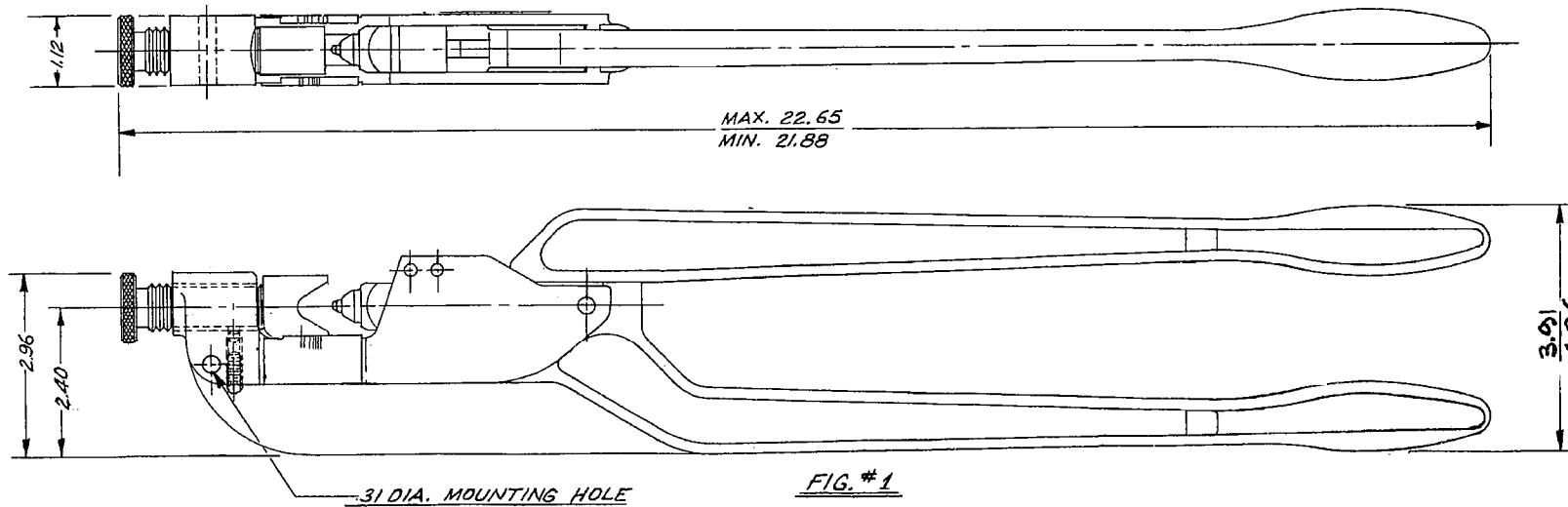
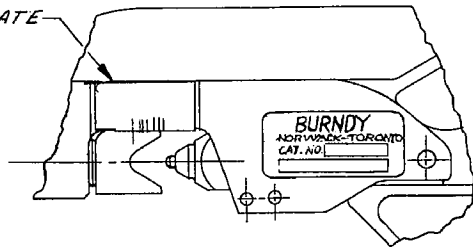


FIG. #1

INSTALLATION INFORMATION

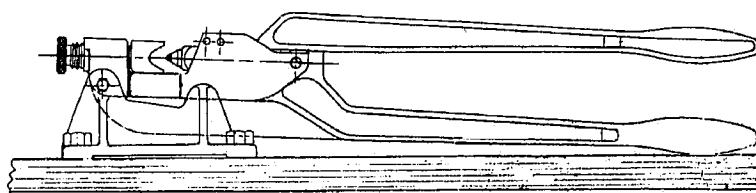
ADJUSTMENT FOR HYDENT CONNECTOR SIZES:
TURN KNOB UNTIL GUIDE LINE ON NEST DIE IS OPPOSITE THE LINE ON THE SETTING PLATE CORRESPONDING TO CABLE SIZE. TO FACILITATE INSERTION OF CABLE AND CONNECTOR ASSEMBLY INTO HYTOOL, NEST DIE MAY BE BACKED OFF FIRST, THEN BROUGHT BACK TO PROPER INDENTING POSITION.
TO REDUCE THE AMOUNT OF FORCE REQUIRED TO MAKE THE INDENT, AN INITIAL INDENT MAY BE MADE WITH THE NEST IN POSITION FOR A LARGER CONNECTOR, AND THE FINAL INDENT MADE WITH THE NEST IN PROPER INDENTING POSITION.

WEIGHT

APPROXIMATELY 3 LBS.

FINISH

BLACK MATTE



ASSEMBLY OF 'MY' HYTOOL WITH 'BMY' BENCH MOUNT

SCALE-QUARTER SIZE

SUPERSEDES DWG'S
SKA3259, SD 20766, SD19387
SD 17374, SD23793, SD 21385 & DM979

HYTOOL	
TYPE MY28, MY29 (GENERAL)	SCALE
DRAWN 4/23/52 J.G.L.	CHECKED 5-15-52 J.C.R.
BURNDY	
ENGINEERING CO. INC.	
DRAWING NO.	REV
SD26316	11

11	7/5/83	SHT 1 AFFECTED, REV. REF PRINT ECP 3488	AJM	CAR
REV	DATE	REVISION DESCRIPTION	BY	CK'D

BLUE BORDER FOR MY28-4 ONLY

91E920S

REV.	DATE	REVISION DESCRIPTION	BY	CHKD.

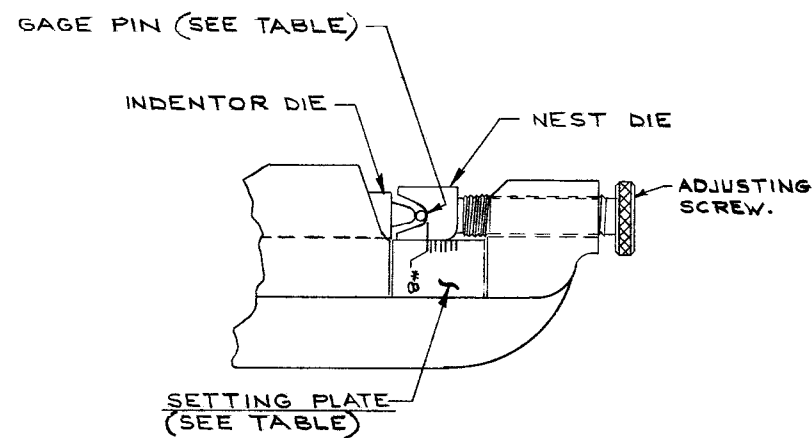


FIG. 1
REAR PLATE

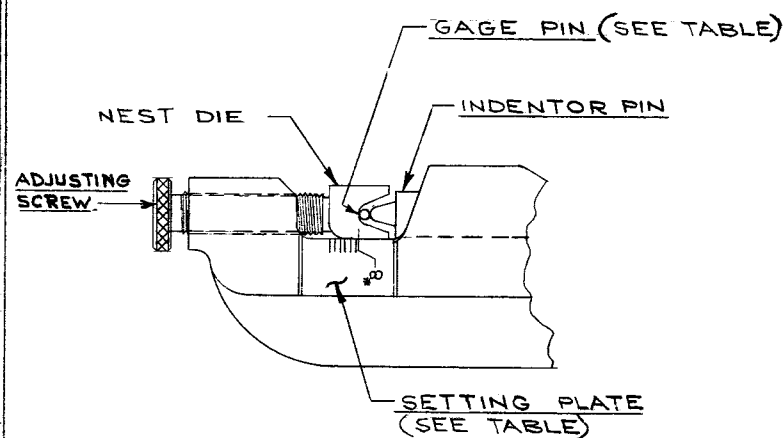


FIG. 2
FRONT PLATE

SETTING PLATE INFORMATION

HYTOOL	SETTING PLATE DESCRIPTION	SETTING SIZE	GAGE PIN DIA	FIG.	SETTING PLATE DESCRIPTION	SETTING SIZE	GAGE PIN DIA	FIG.
MY 28	AIRCRAFT CABLE FLAG TYPE AND TWO PIECE TERMINAL	#8	.120	1	COPPER AIRCRAFT CABLE ONE PIECE TERMINAL	#8 - #6	.090	2
MY 28-1					NAVY CABLE	#23 - #30	.115	
MY 28-4	ALUM. AIR CABLE FLAG TYPE TERMINAL	#8	.165		ALUMINUM AIRCRAFT CABLE	#8	.100	
MY 28-6					COPPER AIRCRAFT CABLE INSULATED TERMINAL	#8	.163	
MY 29	INDENT POSITION	100	.100		COMMERCIAL CABLE COPPER	#8	.140	
MY 29-3	ALUM. BLDG. WIRE ALUM. TERMINALS	#8	.175		COMMERCIAL CABLE COPPER	#8	.140	
MY 29-4	FLEX. CABLE	9/24	.140		COMMERCIAL CABLE COPPER	#8	.140	
MY 29-11	MINE MACHINE CABLE COPPER	#8	.110		COMMERCIAL CABLE COPPER	#8	.140	

NOTES:

TO CHECK LOCATION OF SETTING PLATE CLOSE HANDLES OF HYTOOL, ADVANCING INDENTOR PIN TO ITS HIGHEST POINT (CLOSED). PLACE GAGE PIN (SEE TABLE FOR SIZE) IN NEST GROOVE. ADVANCE NEST DIE (USING ADJUSTING SCREW) UNTIL INDENTOR TIP, GAGE PIN AND BOTTOM OF NEST GROOVE MAKE CONTACT. THE "SETTING SIZE" MARK ON SETTING PLATE (SEE TABLE) SHOULD THEN LINE UP WITH ENGRAVED LINE IN NEST DIE.

SEE SHEET I FOR ACCOMMODATES AND REF. DWG.

SD26316

HYTOOL			
CAT. NO. MY 28, MY 29			SCALE HALF SIZE
DRAWN S.F.P. 12-4-62	CHECKED J.L.R. 12-6-62		
BURNDY Corporation NEWARK, CONNECT.			DES. APPROV. T.P. 12-6-62
			PROD. APPROV.
DRAWING NO.		REV	
SD26316		11	
SHT 2 OF 2			
EC 26979			